



# **BLUETOOTH**

## **Interface**

**CONNECTION AND CONFIGURATION MANUAL**



**Manufacturer:**

**AC Spółka Akcyjna.**

**15-182 Białystok, ul. 27 Lipca 64, Poland**

**tel. +48 85 7438148, fax +48 85 653 8649**

**[www.ac.com.pl](http://www.ac.com.pl), e-mail: [autogaz@ac.com.pl](mailto:autogaz@ac.com.pl)**



## Technical Specification:

Supply voltage	: 12V ± 25%
Working temperature	: -40°C ÷ +70°C
Protection class	: IP 40

## Application:

The interface allows for making wireless connection between gas injection control and a PC equipped with (internal or external) Bluetooth adapter.

## Operation Principle

In order to enable connection and exchange of data between the two devices via the wireless Bluetooth technology, both devices must support the same Bluetooth profile. Wireless connection via the interface between a gas injection controller and a PC is serviced by the serial port profile\*. Correctly configured software, which serves the Bluetooth adapter in a PC, provides access to a virtual serial port, allowing wireless transmission between the devices.

\*The interface is based on a qualified Bluetooth device number B03597.

## Establishing Bluetooth wireless connection

1. Make sure that the PC Bluetooth device is connected and works properly. Connect Bluetooth Interface to the cable connector and turn the ignition key. Make sure that the gas injection controller is switched on and powered.
2. Find the device „Bluetooth Interface” with the use of the Bluetooth software in your PC.
3. Pair the devices using the “bt” passkey.
4. Find the serial port service provided by Bluetooth Interface.
5. Install the virtual serial port (COM) and/or assign the virtual serial port to Bluetooth Interface.
6. Specify the number of the serial port. Establish connection with gas injection controller via the virtual serial port.

The configuration method of Bluetooth wireless connection between a PC application and a gas injection controller may vary, depending on the PC operating system, the Bluetooth device manufacturer and the applied software.

## Examples of Bluetooth application configuration in PCs

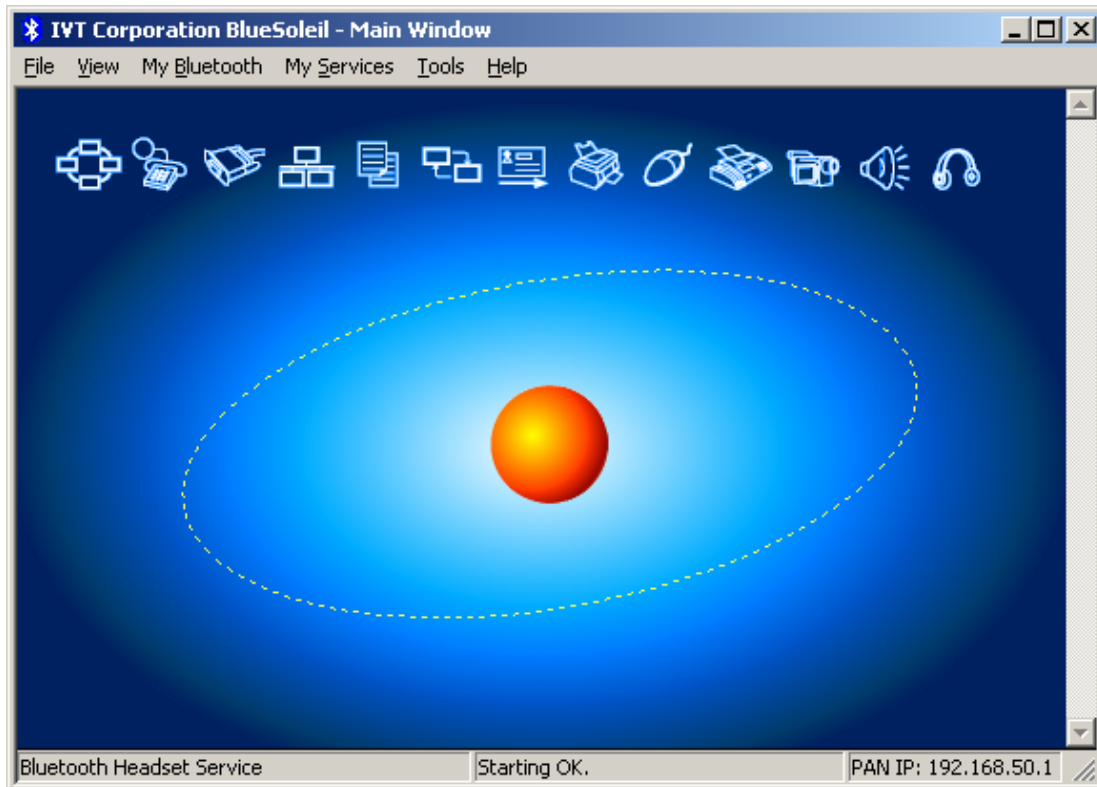
The manual includes examples of configuration methods for wireless connection of a gas injection controller with a PC via Bluetooth interface for the three most popular types of software, servicing Bluetooth technology in PCs.

- BlueSoleil software by IVT
- Microsoft Windows integrated software (available in Windows XP SP2 and Windows Vista)
- BroadCom licensed software

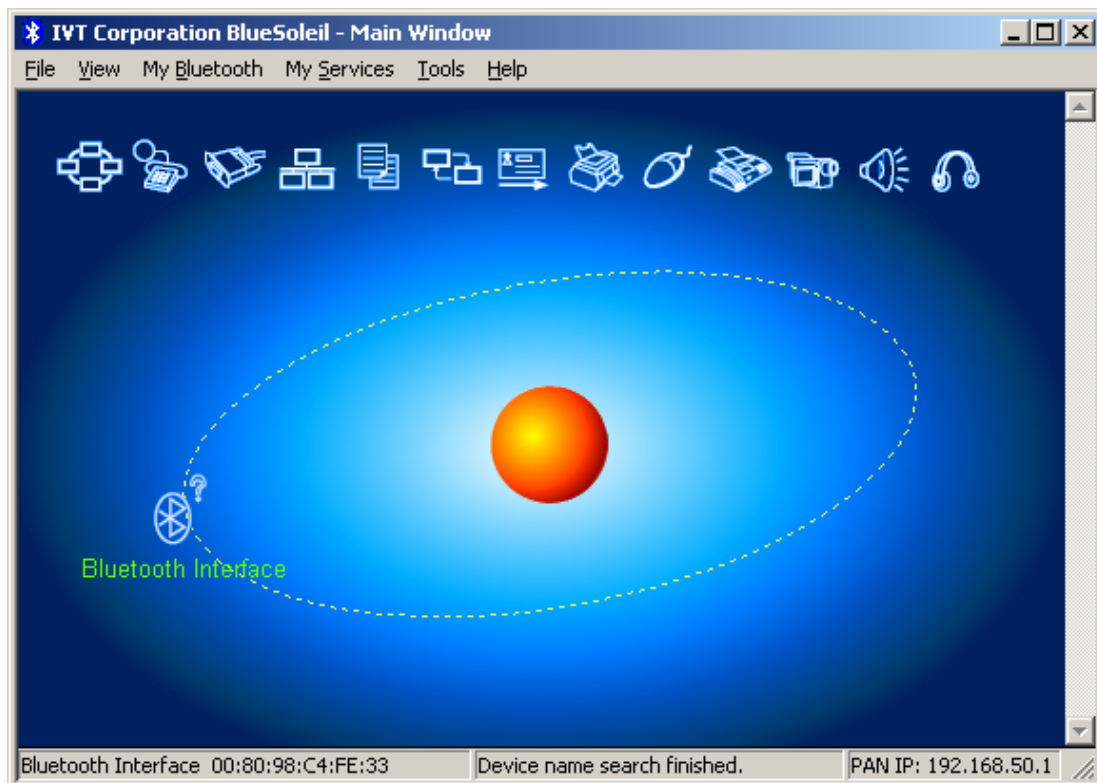
Pictures for the examples may differ, depending on the software version and a PC operating system.



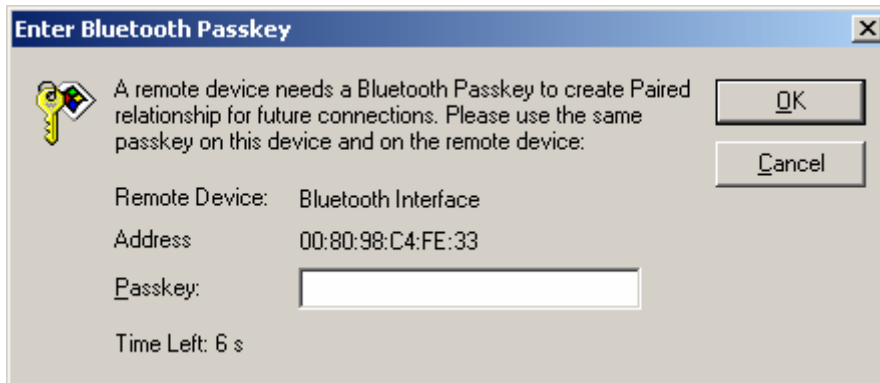
**BlueSoleil software by IVT**



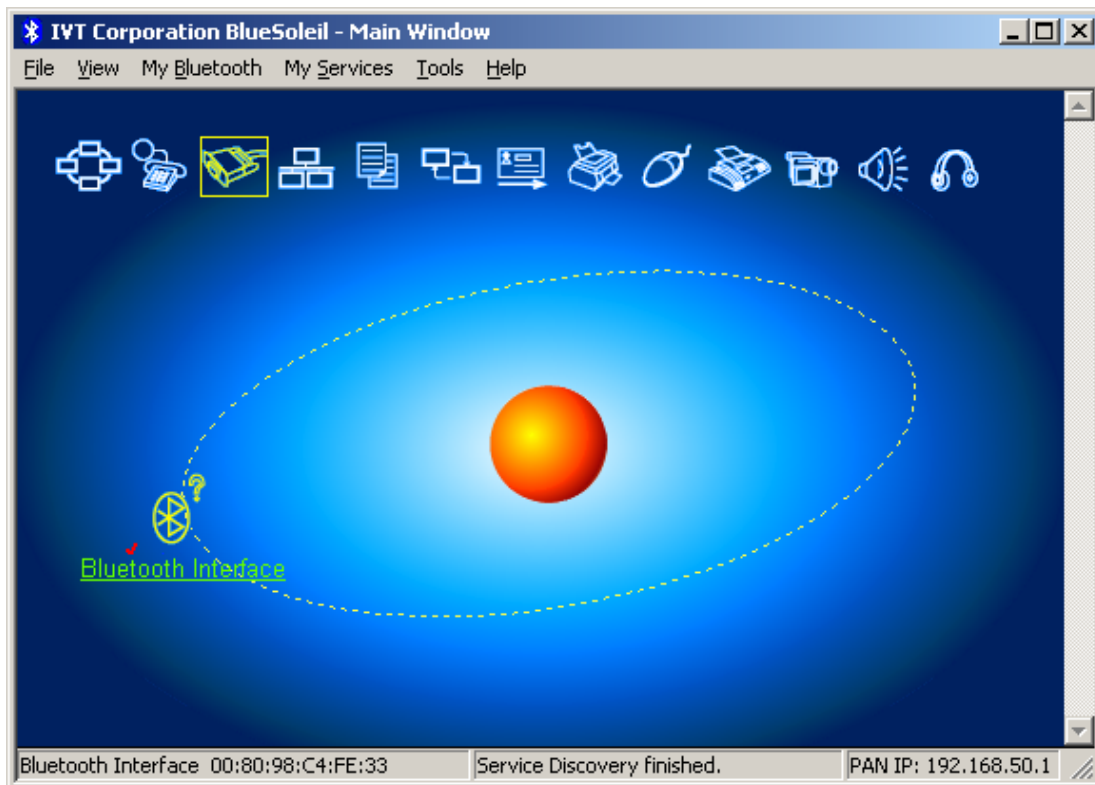
1. Start a device searching application by clicking the sphere in the main screen of the application. An alternative method via the menu *My Bluetooth* → *Bluetooth Device Discovery*.



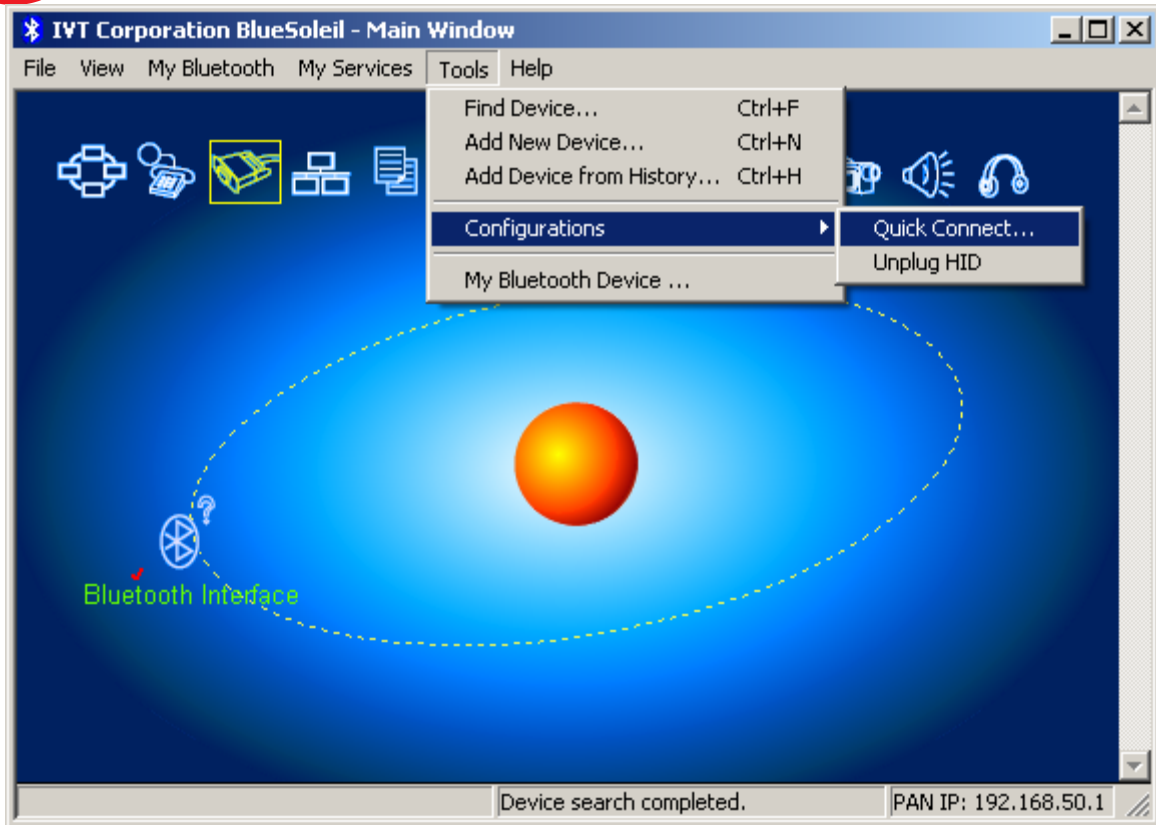
2. After a few seconds, an icon of the selected Bluetooth interface device will appear; click it twice to find the serial port service. An alternative method via the menu *My Bluetooth* → *Bluetooth Device Discovery*.



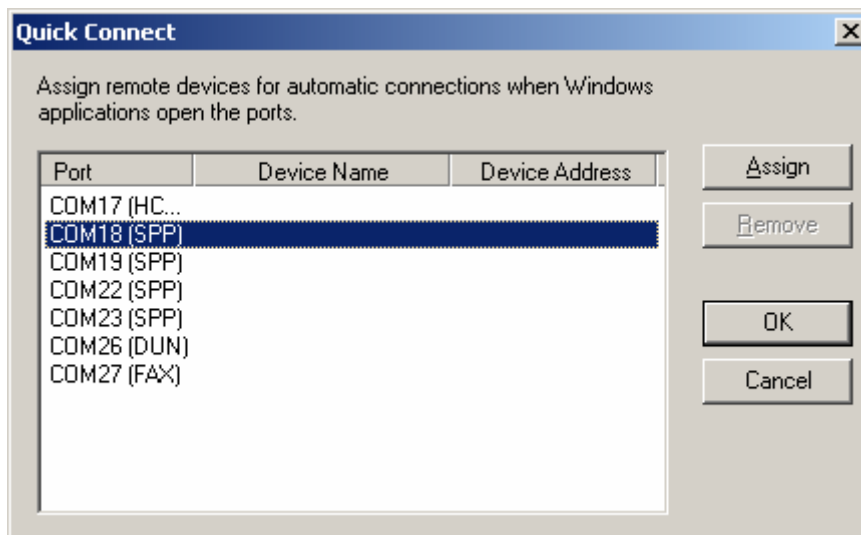
3. If the device is coordinated for the first time, a message asking for the passkey will be displayed. Enter "bt" and click OK.



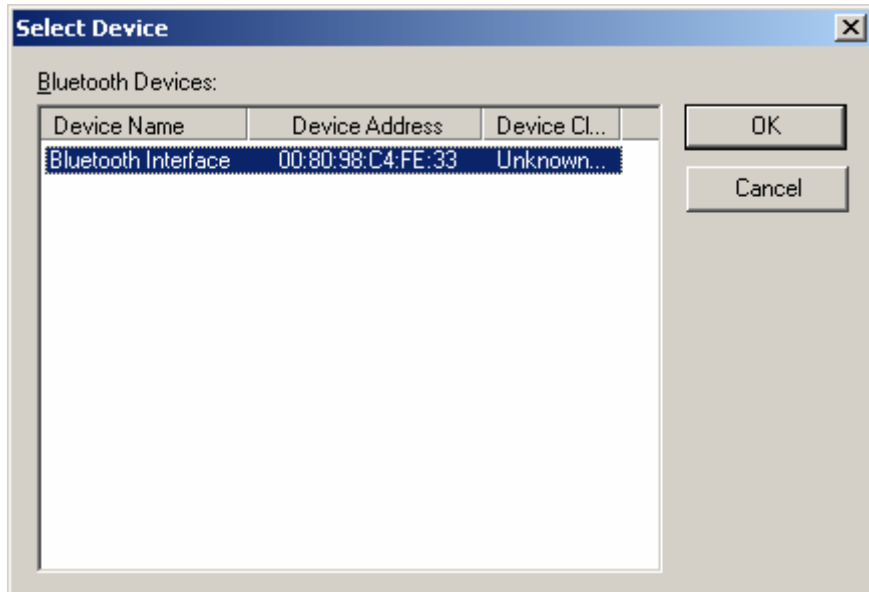
4. After entering the correct passkey, a connector symbol will be highlighted in the upper part of the application screen, which signals that Bluetooth interface services the serial port profile.



5. Next, select the following option from the menu *Tools* → *Configurations* → *Quick Connect*.

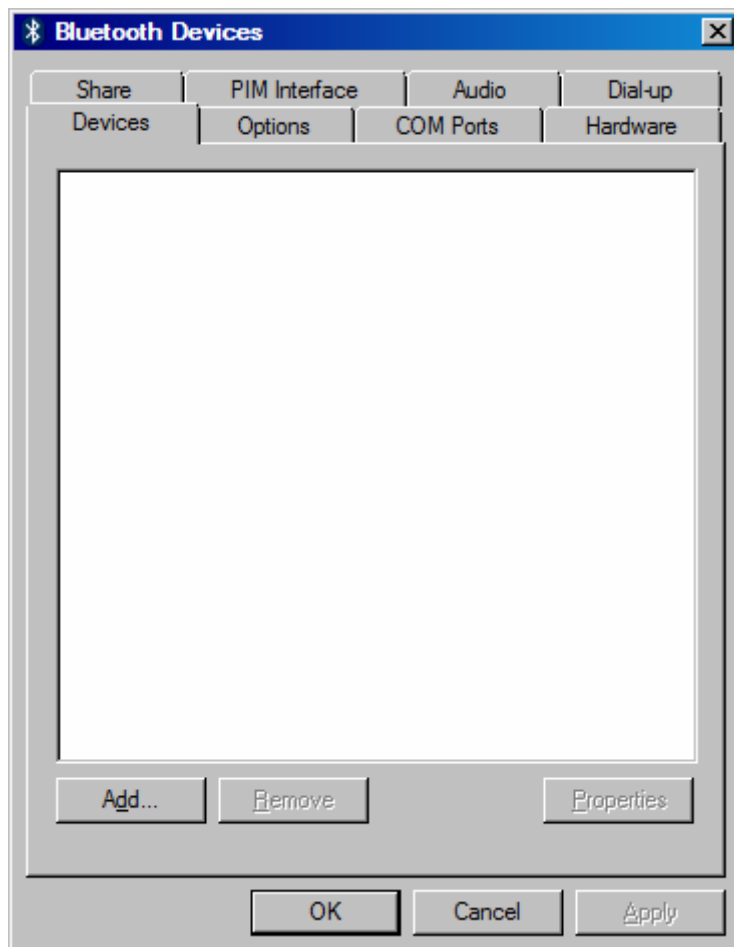


6. The application will display a screen with a list of virtual COM ports. Select the one marked SPP and click „Assign”.



7. A list of Bluetooth devices will be displayed; select the „Bluetooth Interface” and click „OK”. From this moment, wireless communication with a gas injection controller via the previously selected virtual COM port is possible.

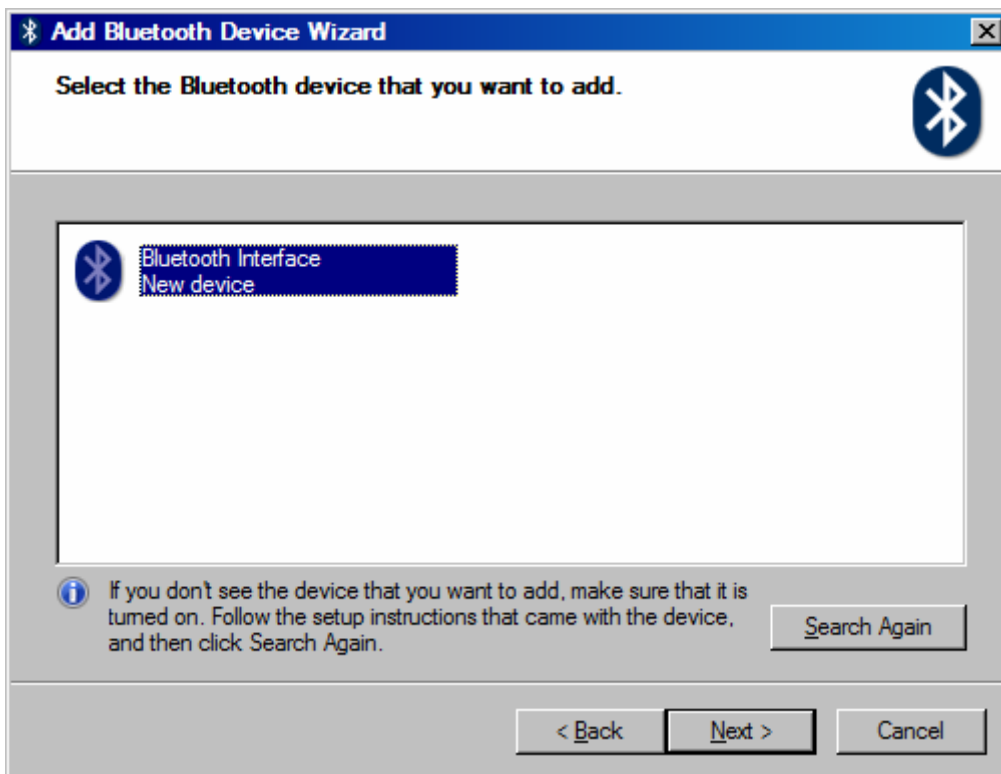
### **Microsoft Windows integrated software**



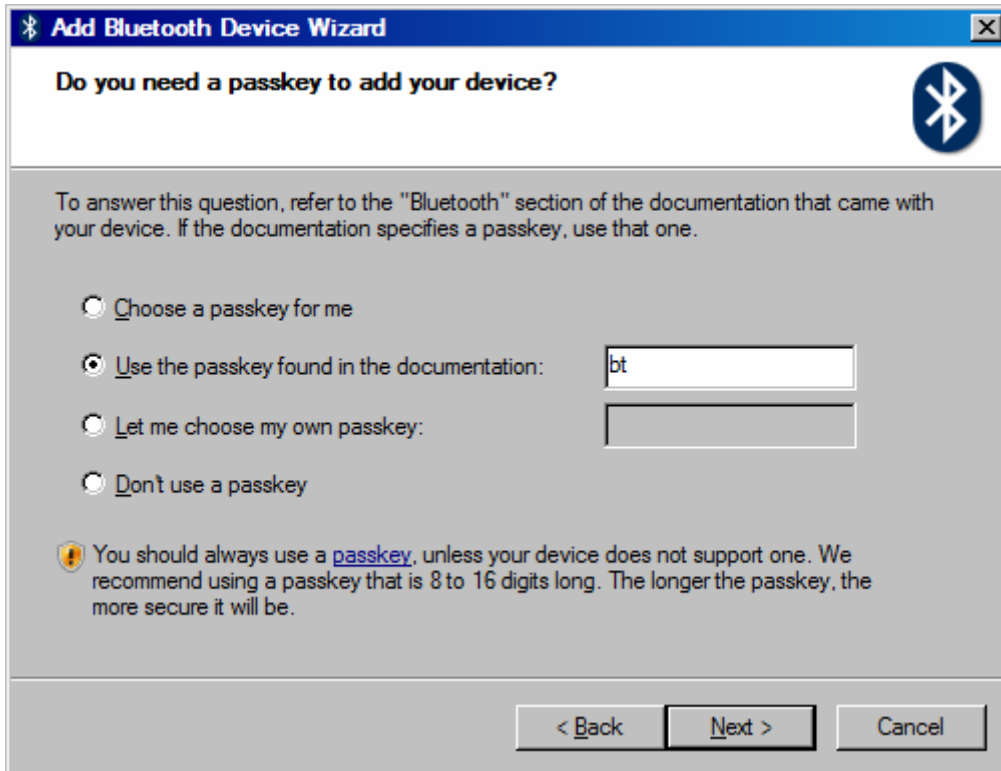
1. Click „Add” and start to search the Bluetooth Interface.



2. In the displayed dialogue box mark the option „My device is setup and ready to be found“. Click „Next“.



3. Once Bluetooth interface is found, an icon named „Bluetooth Interface“ will be displayed in a new screen. Click the device to highlight it and click „Next“.

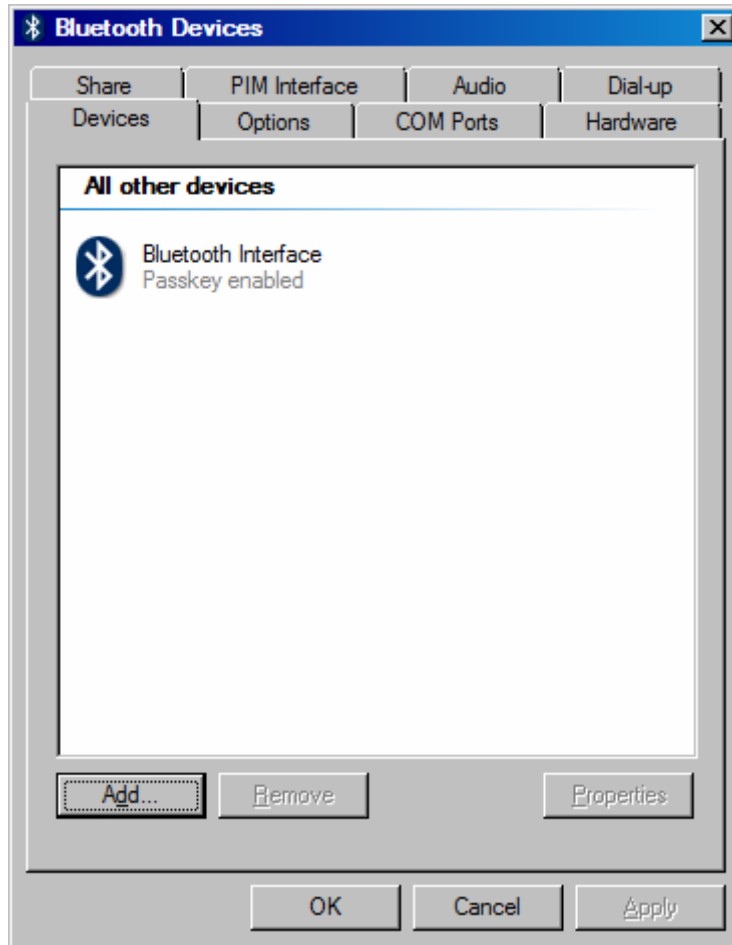


4. In the next dialogue box select the option „Use the passkey found in the documentation” and enter “bt” in the field. Click „Next”.



5. Information on configuration of virtual COM ports will be displayed. Click „Finish”.

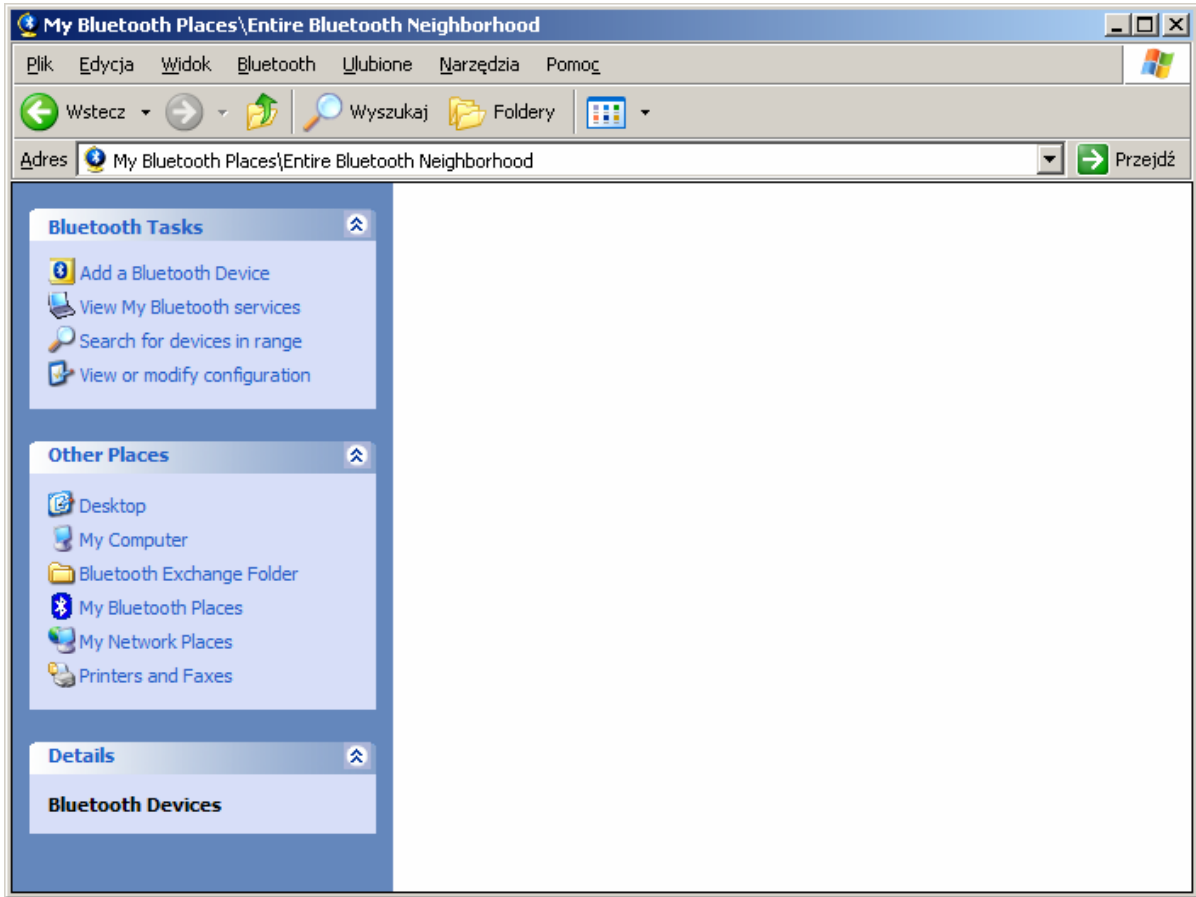




6. The Bluetooth interface device is configured. From this moment, wireless communication with a gas injection controller via virtual COM port, marked as „Outgoing Port COM” (as in the picture in the previous step) is possible.



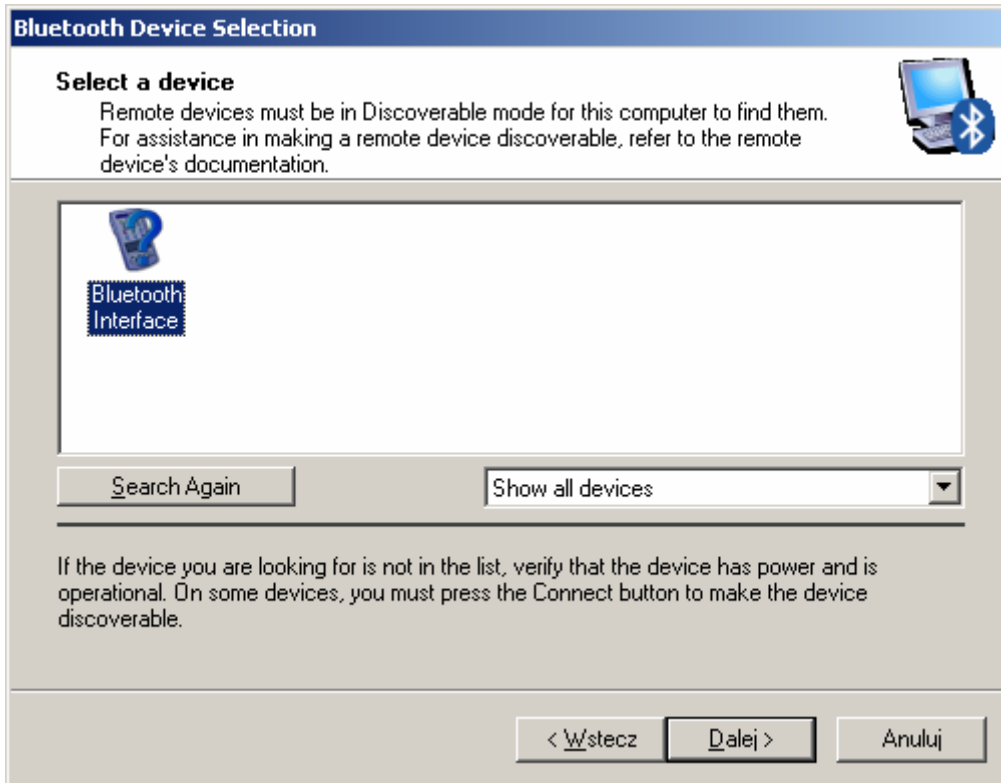
## **BroadCom licensed software**



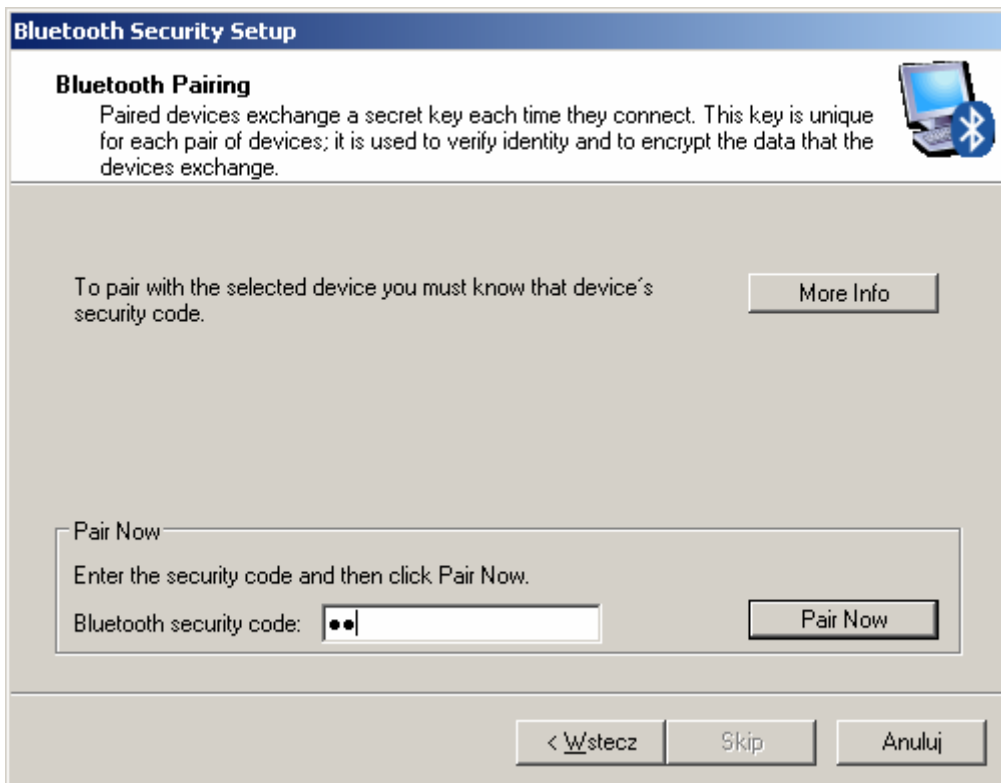
1. In the window „My Bluetooth places” click the option „Add a Bluetooth device” to activate the Bluetooth installation creator.



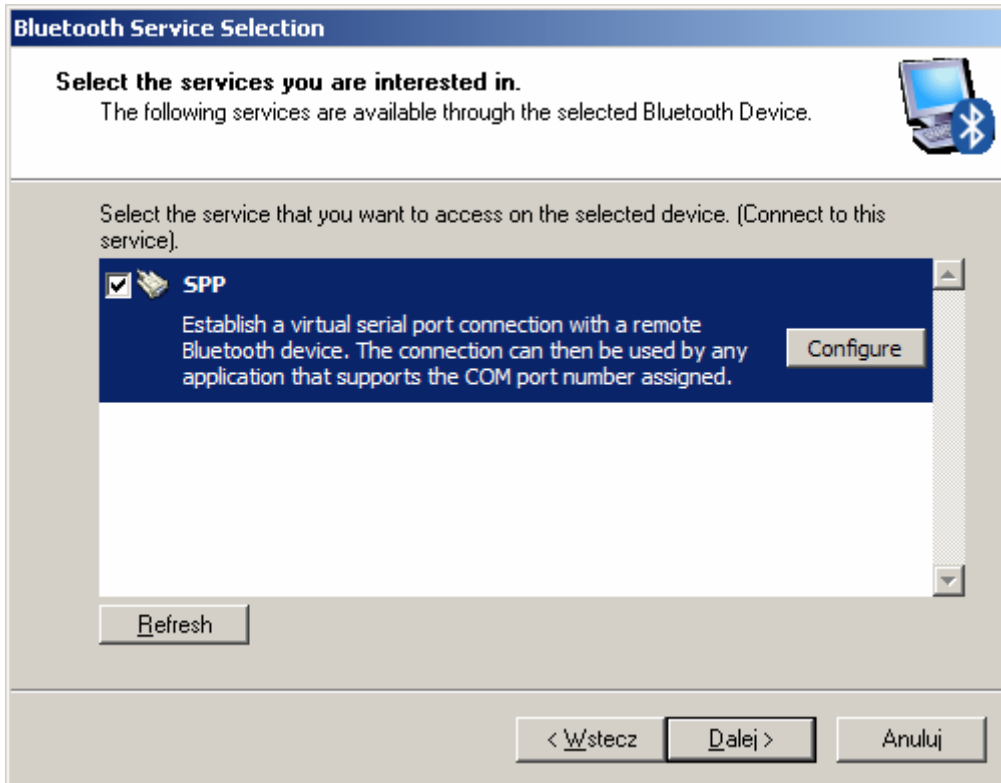
2. The activated wizard will display a welcome screen. To continue, click „Next”.



3. The application will start searching for the devices within the range. If a Bluetooth interface device is found, a relevant icon will be displayed in a new window. Select the device by clicking the Bluetooth interface icon and click „Next”.



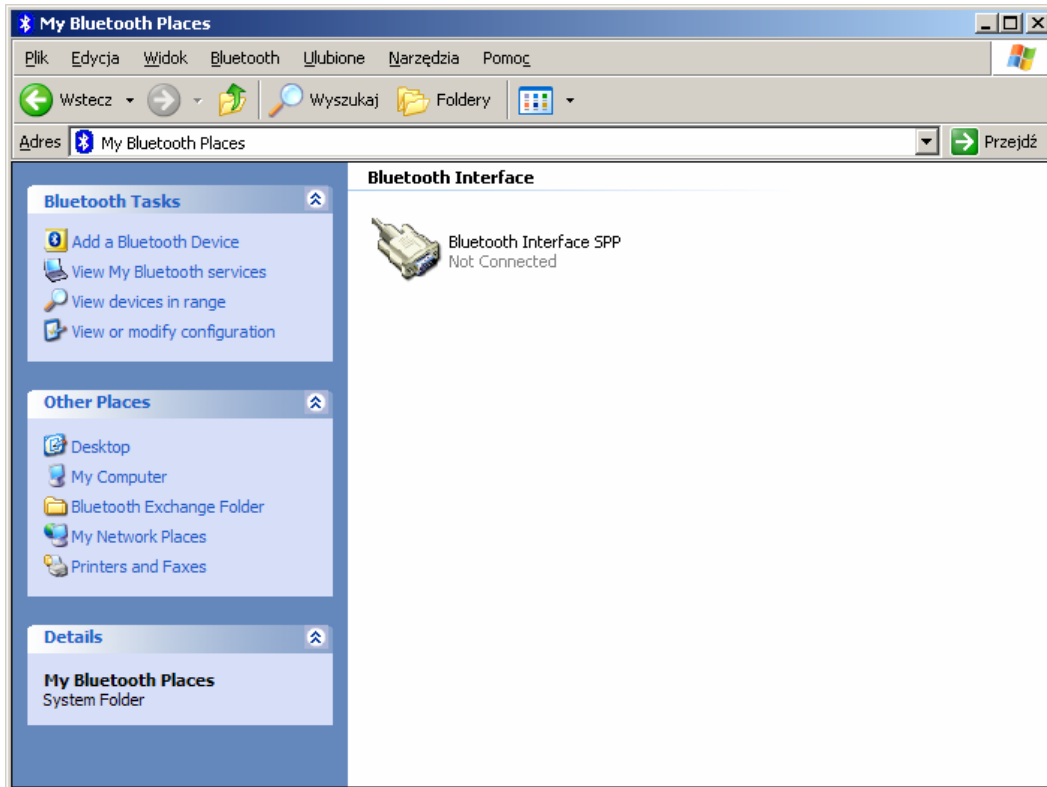
4. The application will display a dialogue box with a field in which the „bt” passkey must be entered. After entering the passkey, click „Pair Now”.



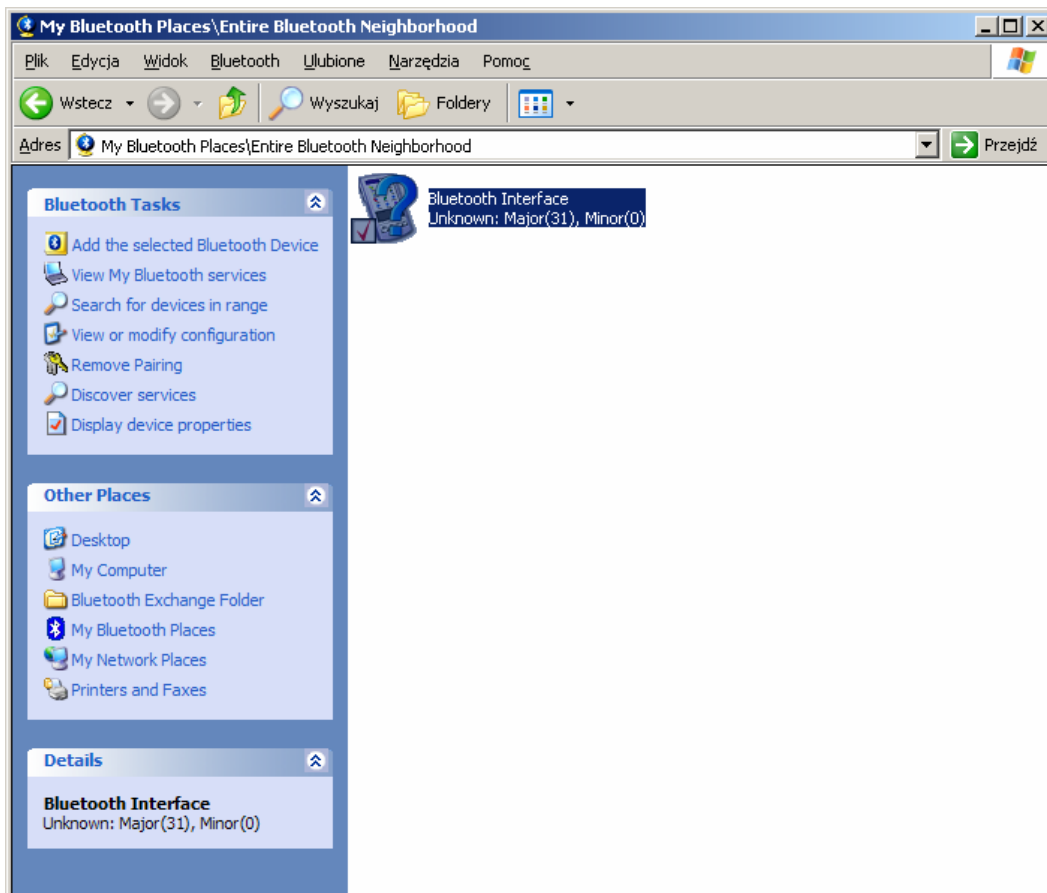
5. In the next window mark „SPP” service and click „Next”. Virtual serial port will be automatically installed.



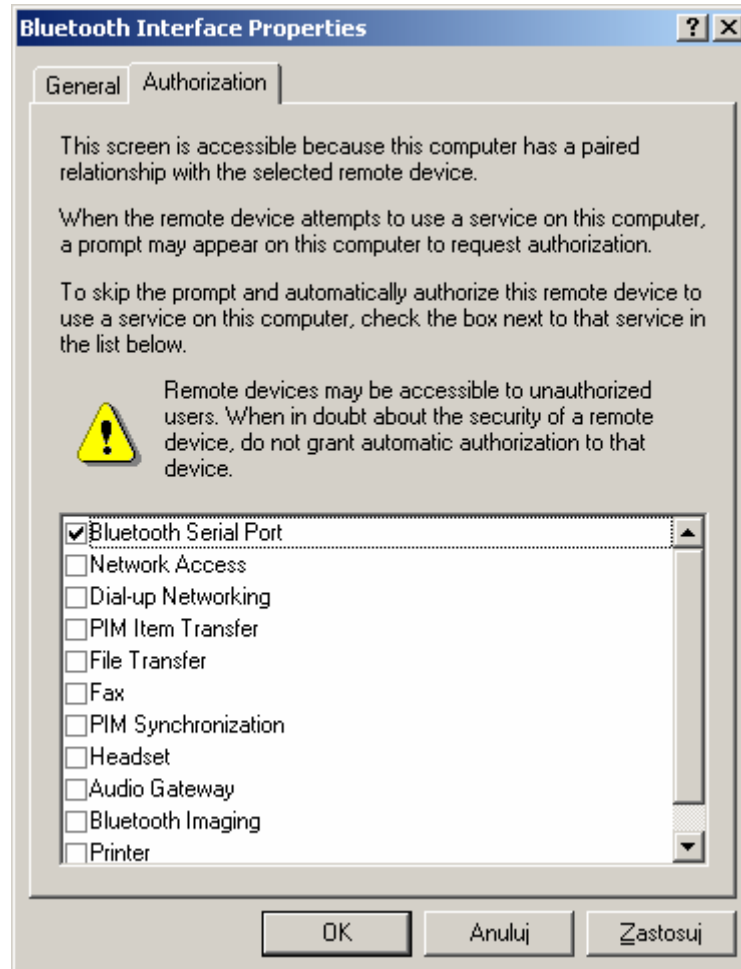
6. After successful installation, a window with summary of the creator operation will be displayed. Click „Finish”.



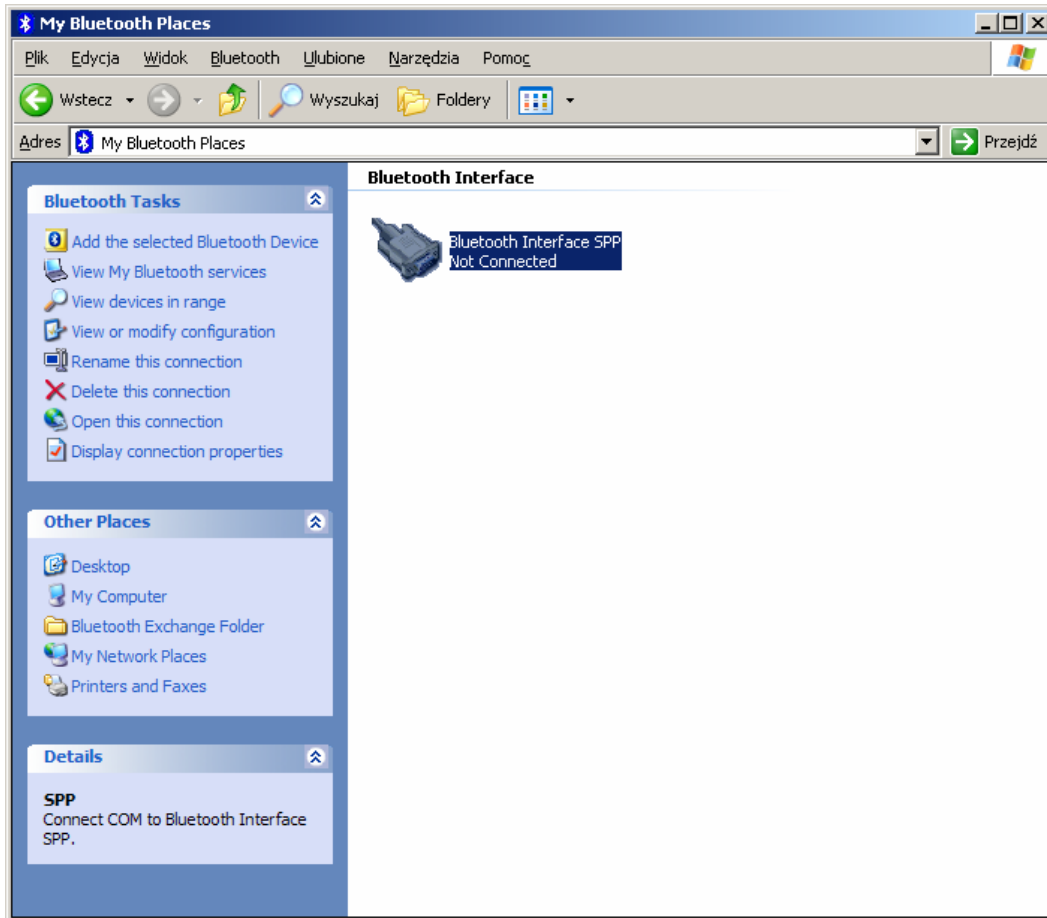
7. In the folder „My Bluetooth places” an icon will be displayed representing wireless connection via the Bluetooth interface. In order to configure access level, click option „View devices in range”.



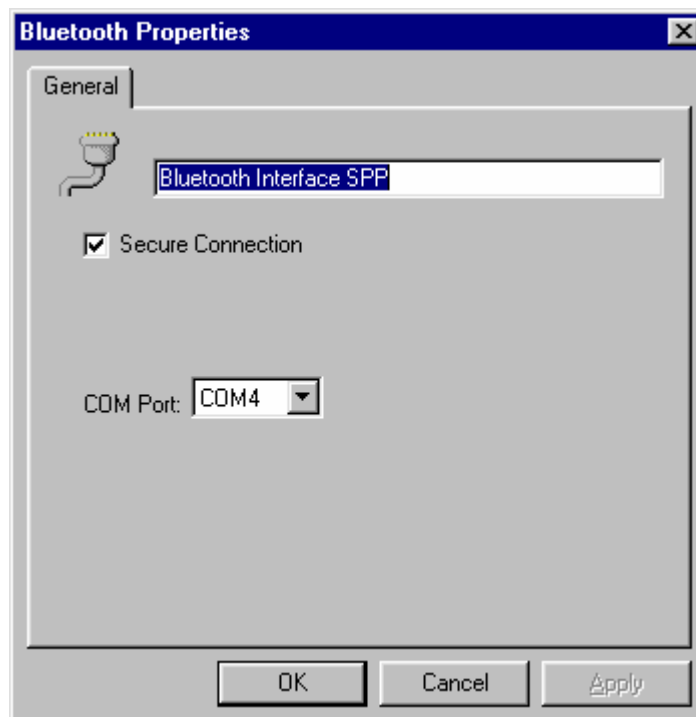
8. In the window „Entire Bluetooth Neighborhood” mark the „Bluetooth Interface” icon and click „Display device properties”.



9. In the dialogue box „Bluetooth Interface properties” select bookmark „Authorization” and mark „Bluetooth Serial Port” in the list. Approve the changes by clicking „Apply” and „OK”. Return to „My Bluetooth places”.



10. By clicking once, mark the icon of Bluetooth interface connection and then select the option „Display connection properties” in order to specify the COM port number, which is used by the connection.



11. Read the COM port number from the displayed window, which can be now used for wireless communication with a gas injection controller.